

PART OF THE NE. 1/4, OF SECTION 28, T.7N., R.1W., S.L.B. & M.
R&K PARKINSON MINOR SUBDIVISION

345

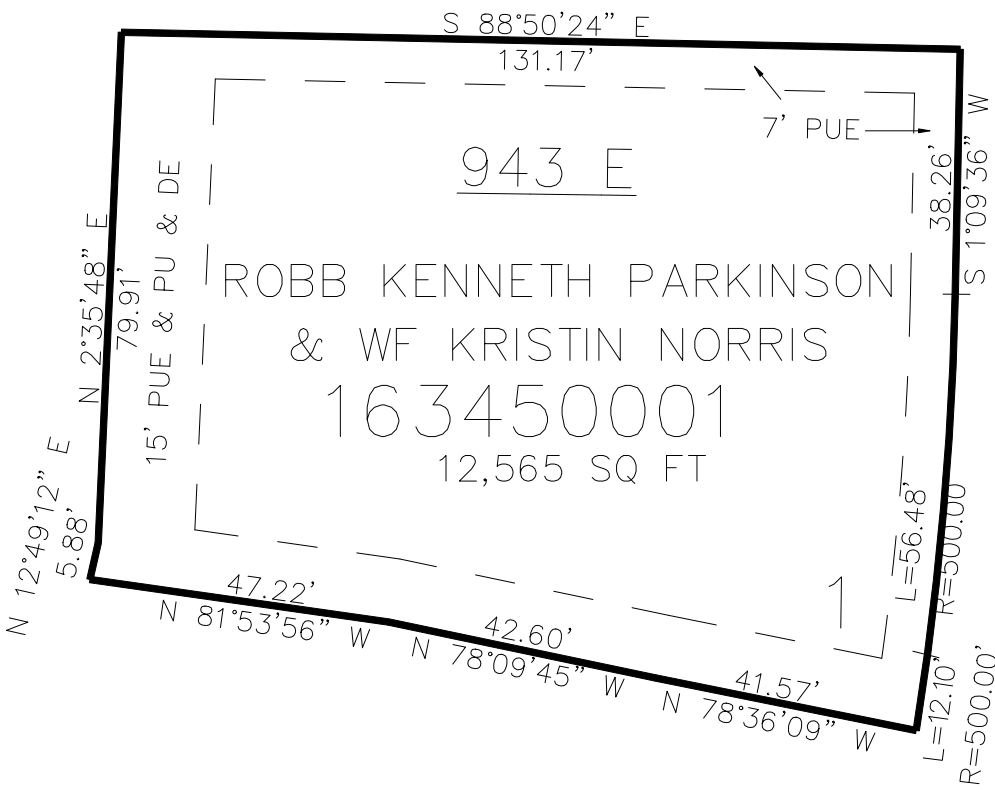
TAXING UNIT: 10

IN NORTH OGDEN CITY
SCALE 1" = 30'

SEE PAGE 5

3300 NORTH STREET

SEE PAGE 151



950 EAST STREET

SEE PAGE 17-7

10' UTILITY & DRAINAGE EASEMENTS EACH
SIDE OF PROPERTY LINES AS INDICATED
BY DASHED LINES EXCEPT AS OTHERWISE
SHOWN.

FOR COMPLETE ENG DATA SEE
ORIGINAL DEDICATION PLAT IN
BOOK 82, PAGE 91 OF RECORDS.